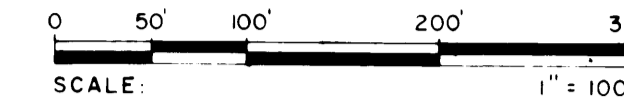


A
PLAT
OF

STUART WEST PHASE II

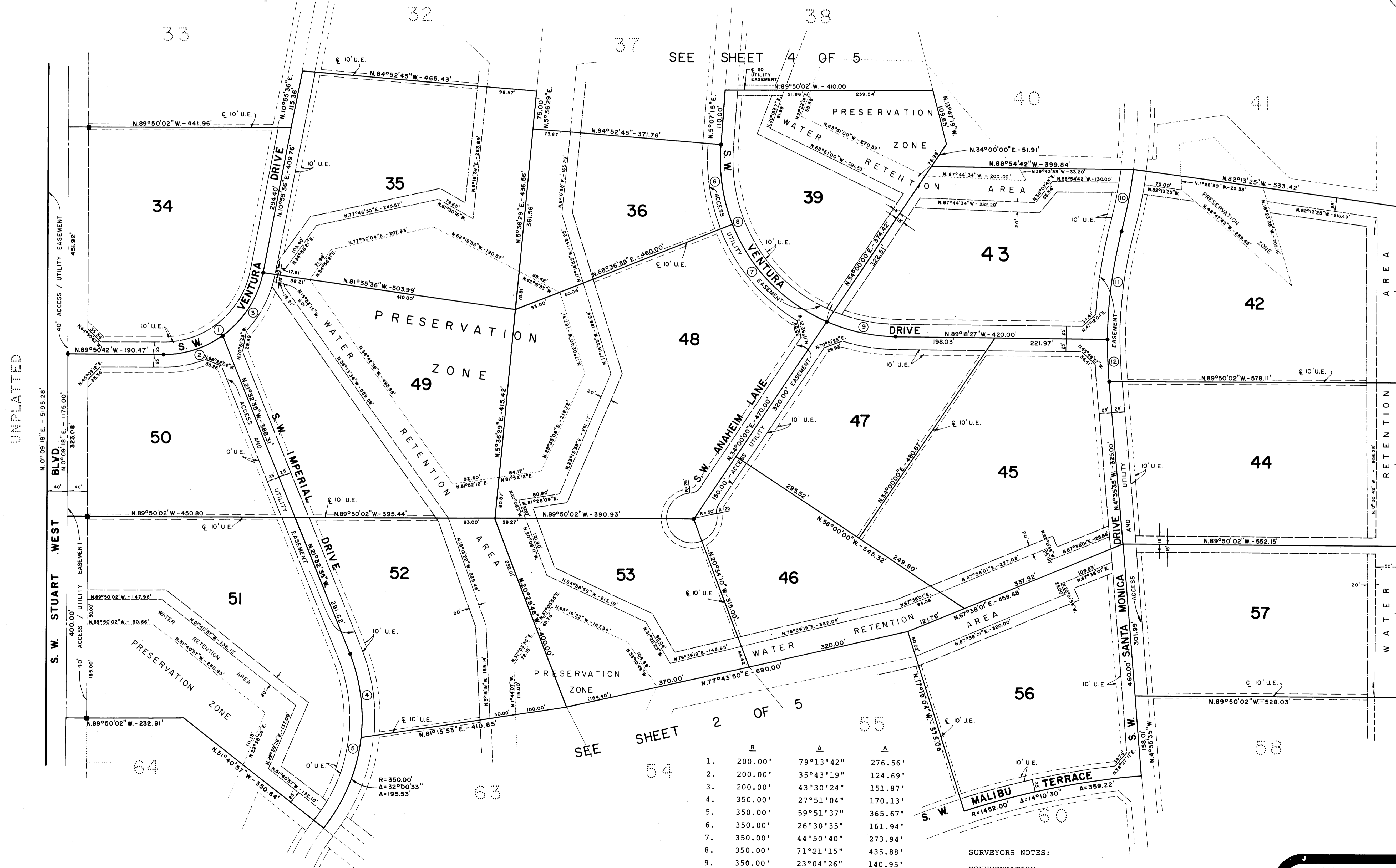
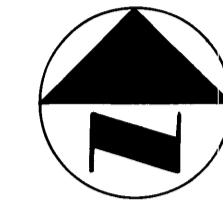
BEING A PORTION OF SECTION ONE
TOWNSHIP 38 SOUTH, RANGE 39 EAST
MARTIN COUNTY, FLORIDA



SEPTEMBER, 1982

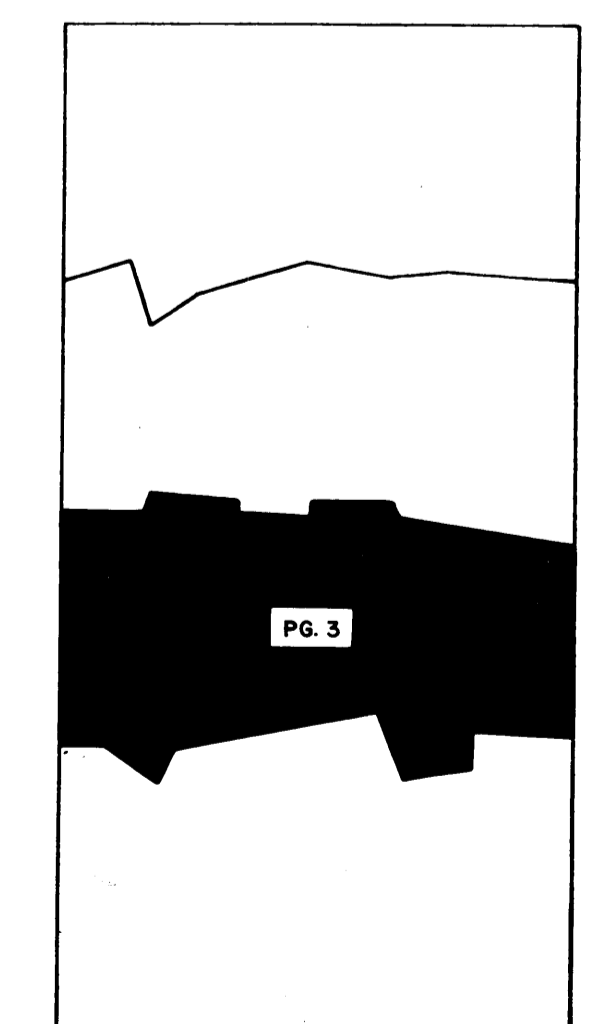
I, LOUISE V. ISAACS,
CLERK OF THE CIRCUIT
COURT OF MARTIN COUNTY,
FLORIDA, HEREBY CERTIFY
THAT THIS PLAT WAS FILED
FOR RECORD IN PLAT
BOOK 9, PAGE 21,
MARTIN COUNTY, FLORIDA,
PUBLIC RECORDS, THIS
22nd DAY OF DEC,
A.D. 1982.

LOUISE V. ISAACS, CLERK
CIRCUIT COURT
MARTIN COUNTY, FLORIDA
BY _____
DEPUTY CLERK
FILE NO. _____



BEARING BASE:
SOUTH LINE OF THE SOUTHEAST 1/4
OF SECTION 13 IS TAKEN AS BEING
S. 88°50'33" W. AND ALL OTHER
BEARINGS ARE RELATIVE THERETO.

- CUL-DE-SAC HAVE 50' RADII
- ACCESS/ EASEMENT
- MARSH PRESERVATION AREA
- DRAINAGE EASEMENT
- 20' DRAINAGE MAINTENANCE EASEMENT



KEY MAP

SEE SHEET 2 OF 5

	R	A	A
1.	200.00'	79°13'42"	276.56'
2.	200.00'	35°43'19"	124.69'
3.	200.00'	43°30'24"	151.87'
4.	350.00'	27°51'04"	170.13'
5.	350.00'	59°51'37"	365.67'
6.	350.00'	26°30'35"	161.94'
7.	350.00'	44°50'40"	273.94'
8.	350.00'	71°21'15"	435.88'
9.	350.00'	23°04'26"	140.95'
10.	1000.00'	7°10'51"	125.33'
11.	900.00'	13°48'51"	216.99'
12.	900.00'	5°17'09"	83.03'

SURVEYORS NOTES:

- = DENOTES PERMANENT REFERENCE MONUMENT (P.R.M.)
- = DENOTES PERMANENT CONTROL POINT (P.C.P.)
- U.E. = UTILITY EASEMENT

LINDAHL, BROWNING, FERRARI & HELLSTROM, INC.
Consulting Engineers, Planners & Surveyors
425 INDIANTOWN ROAD 951 COLORADO AVENUE
JUPITER, FLORIDA 33418 STUART, FLORIDA 34984
11 SOUTH SEASIDE STREET
FORT PIERCE, FLORIDA 33450